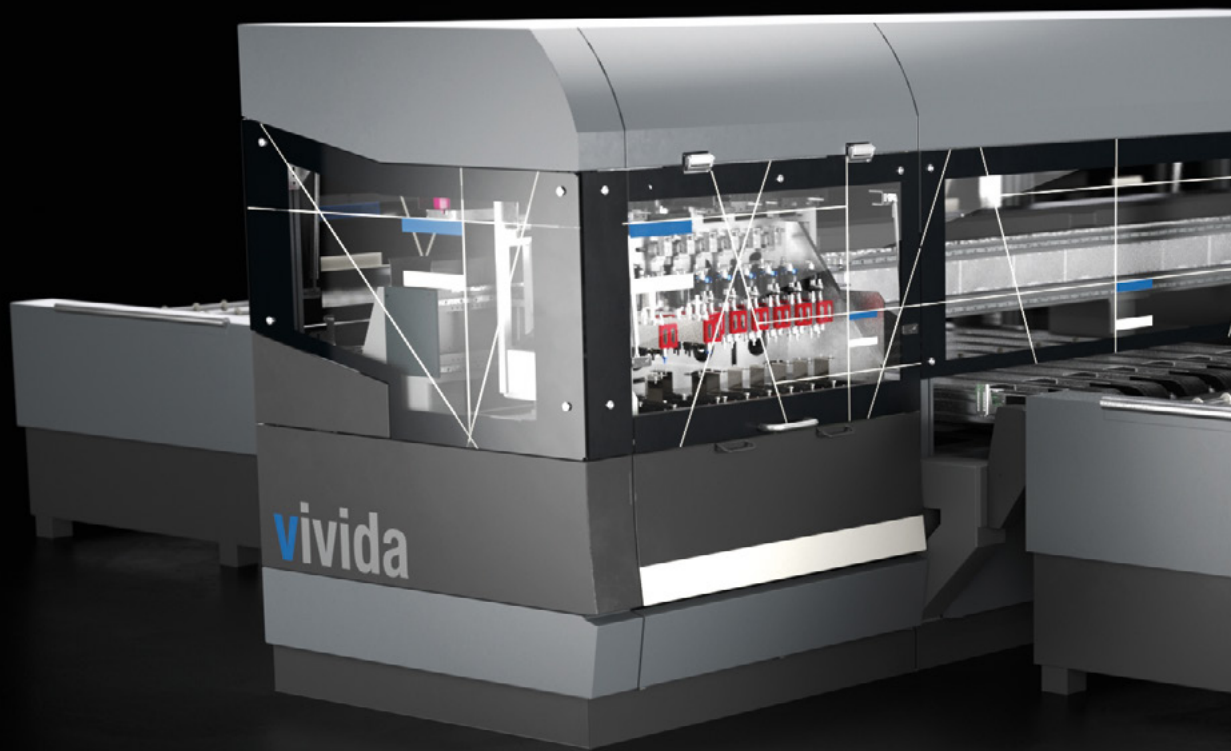


vivida



vivida



CORE BUSINESS

An overview that makes the difference. What characterizes Keraglass as a worldwide leader in the glass industry is its «all around» approach. With innovative, functional and customer oriented solutions. Developed around a deep and direct analysis of the issues that may arise in glass processing on flat and curved tempering, screen printing, roller-coating and laminating.

- **FLEXIBILITY AND INNOVATION**

Vivida combines flexibility, practicality, and quality.

- Vivida is a high-definition digital printer that uses ceramic ink. It is ideal for reproducing any kind of image on the glass surface and can be used in all sectors, especially in furnishing, architecture and automotive.
-

The innovative software can process the graphical designs to be printed on the glass in a simply and intuitive manner. The propriety software and industrial computer installed on the machine manage all of its operating parameters through a simple and direct user interface.

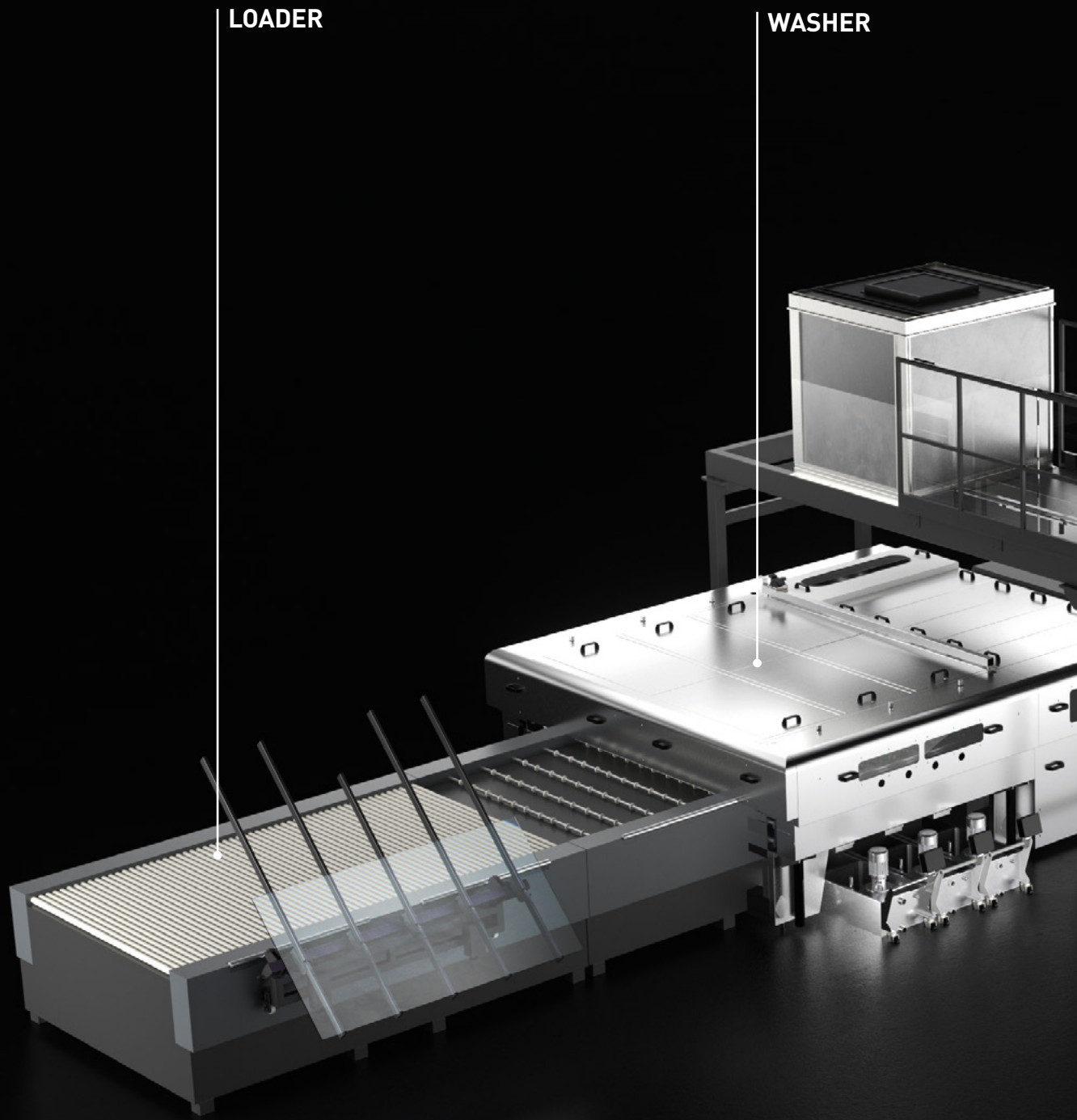


HEADQUARTERS

The headquarter in Baiso (Italy), with an area of 10,000 sqm includes executive offices, production workshops, R&D, warehouses in addition to the technological Showroom. All these aspects are the real flagship for technology and innovation.

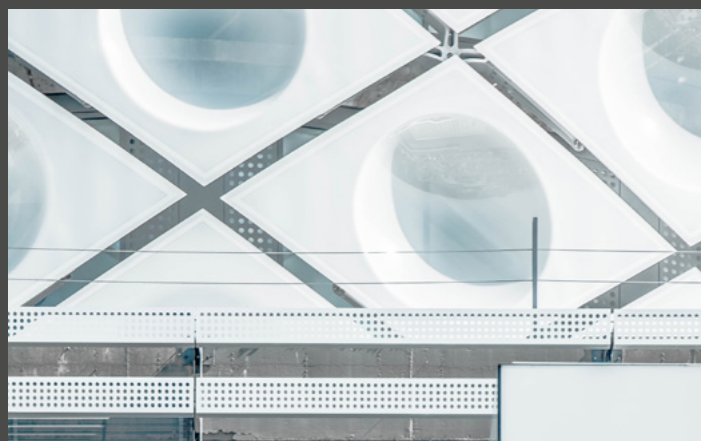
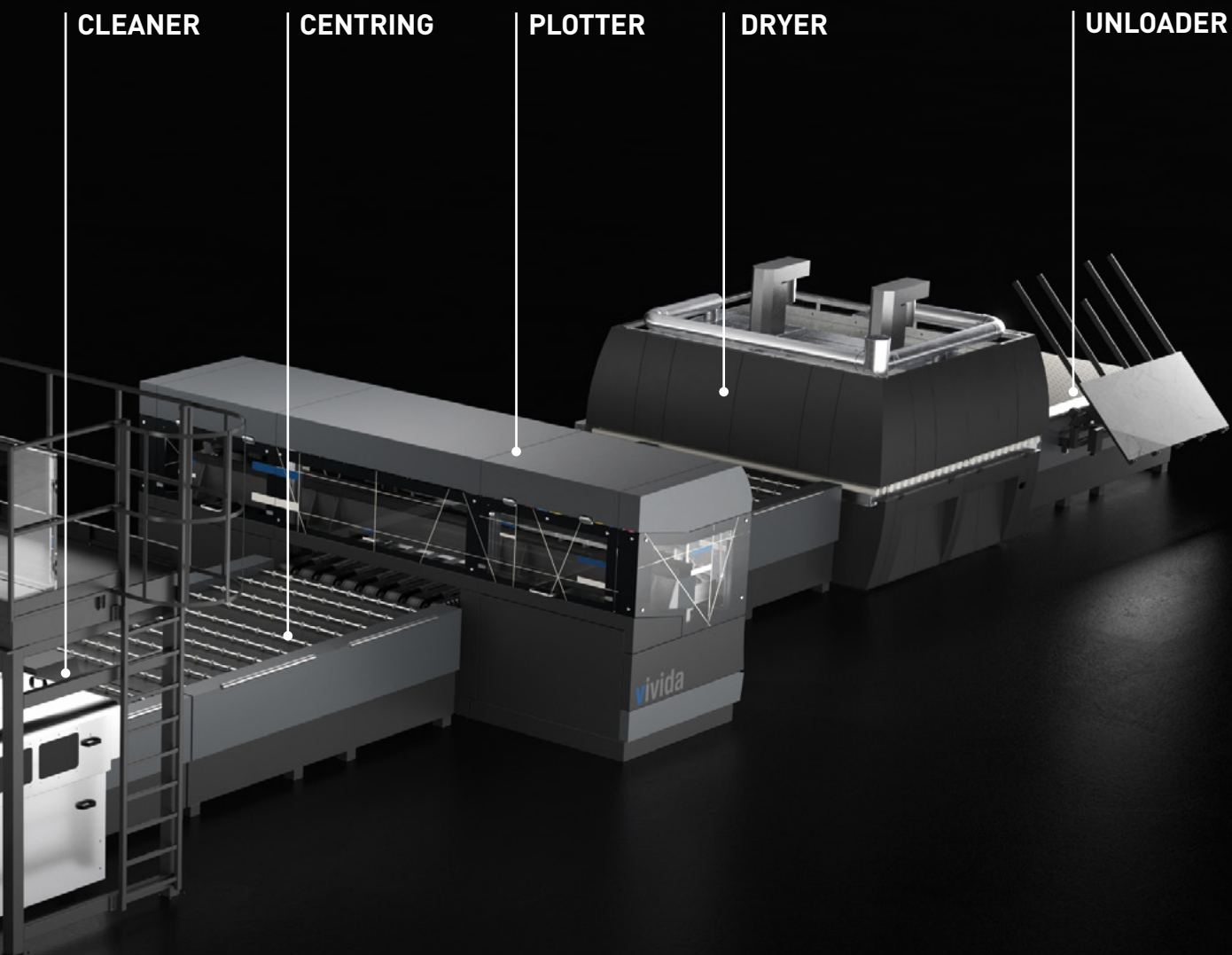


vivida



COMPLETE SOLUTION

Keraglass offers the customer a complete and automatic solution that reduces idle times associated with washing, glass cleaning, and adjustments, plus the related labour costs.







vivida

MULTI PASS DIGITAL PRINTING LINE

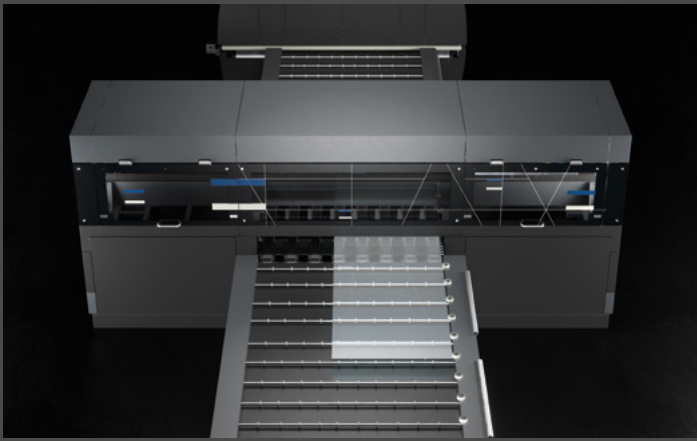
- + AUTOMATIC ADJUSTMENT AND GLASS CENTRING
 - + USE OF XAAR HEADS
 - + RAPID COLOUR CHANGE AND TANK CLEANING
 - + MOVEMENT WITH LINEAR MOTOR
 - + OPTION OF WORKING WITH VARIOUS INK MAKERS
 - + REDUCTION OF COSTS
 - + EASY TO USE
 - + LOW MAINTENANCE COSTS
-





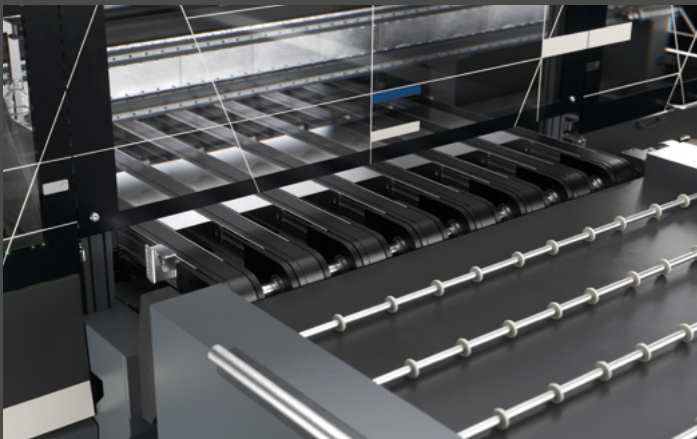
NO DUST SYSTEM : CLEANING AND QUALITY

A glass cleaning system can be installed upstream of the print room. This exclusive system operates continuously without interrupting movement of the glass. The system can remove contaminants and dust from the glass surface before printing, thereby improving print quality



AUTOMATIC CENTRING

An electromechanical system mounted on the infeed roller conveyor upstream from the printer allows automatic centring of glass of various types without requiring operator actions. Centring is essential for absolute printing precision, respecting measurements and quality standards.



PERFECTLY CONTROLLED TRANSPORT MOVEMENT

The glass is transported through the printing process on calibrated belts driven by a brushless motor controlled with absolute precision.



COLOURS MAGAZINE

Ink holder installed on board, connection lines in short circuit: rapid cleaning and colour change, automatic colour mixing system with motor and magnets.

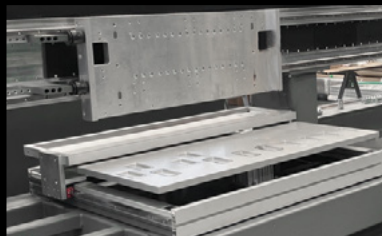
LINEAR MOTOR

The head is moved by a linear motor with absolute precision



STAND-BY

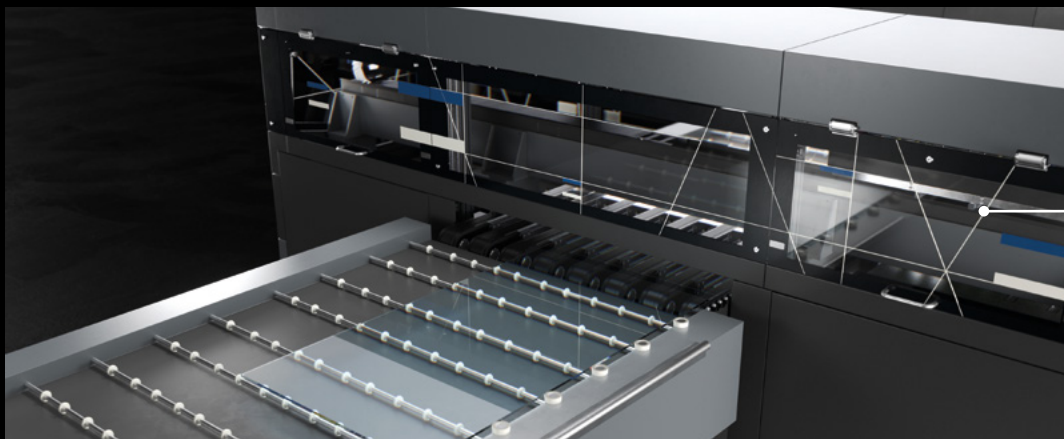
An exclusive system mounted below the printing heads magazine allows operation of the heads to be paused without necessitating unscheduled maintenance actions.



SOLUTIONS

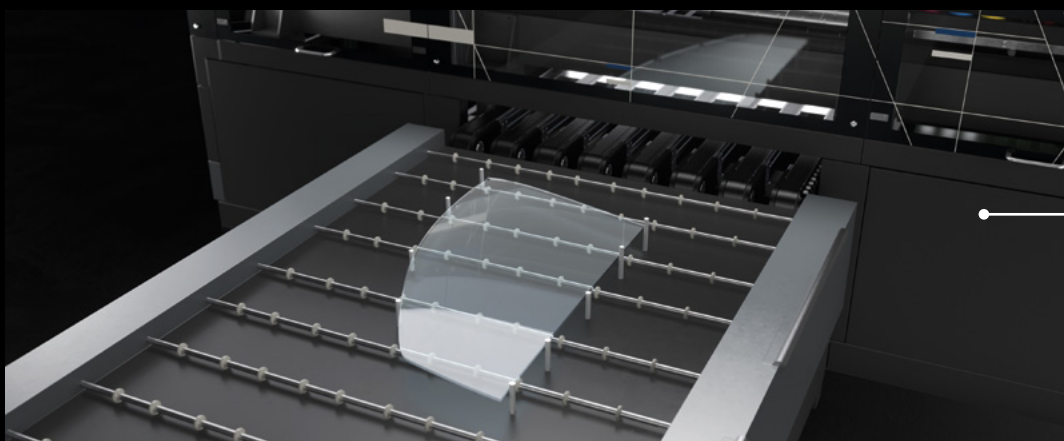
- Based on the industry served, customers can choose the most suitable centring for their needs
-
-

CENTRING FOR RECTANGULAR GLASS



architecture, furnishing, interior design

CENTRING FOR BENT GLASS



automotive, home appliances

ARCHITECTURE



INTERIOR DESIGN



HOME APPLIANCES

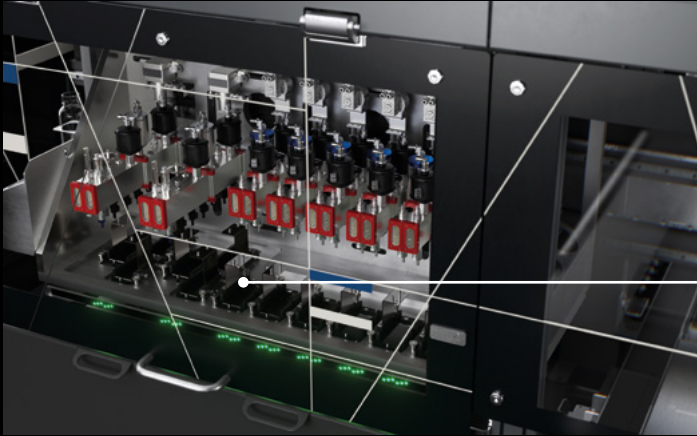


AUTOMOTIVE



PRINTING HEADS

- High colour intensity and fast print speeds, electronics for each printing head with 7 variable drops, fast replacement and alignment: all features shared by the dinamica printing heads
-
-



-
- + PRINTING HEAD (XAAR)
 - + NATIVE RESOLUTION 360/720 DPI
 - + IMPROVED JET FREQUENCY
 - + ACCURATE NOZZLE POSITIONING DESIGN
 - + STAINLESS STEEL NOZZLE PLATE
 - + HIGH INK CIRCULATION FLOW RATE
 - + VARIABLE DROPLET SIZE MANAGEMENT
 - + 2 COLOUR CHANNELS



TOUCH SCREEN OPERATOR INTERFACE

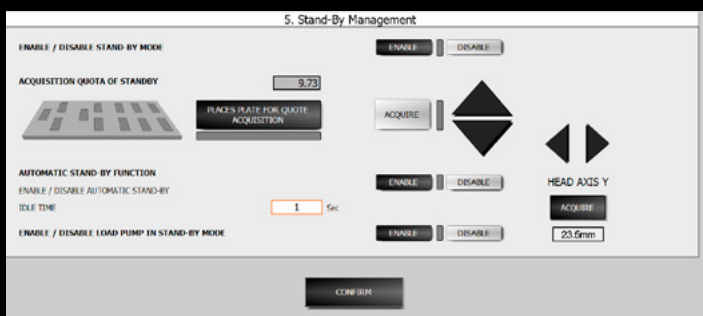
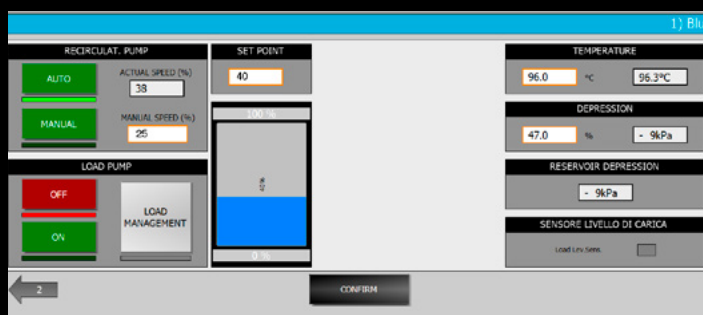
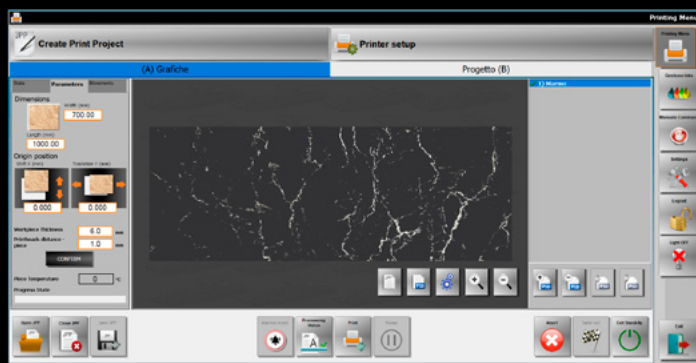
- A touch screen is provided for management and control of the machine and the graphics.

The operator interface is intuitive, making it easy to manage even the most complex work processes by editing the operating parameters of the machine and those required to optimise the print file, should this be necessary.

- editing the operating parameters of the machine and
- those required to optimise the print file, should this be necessary.

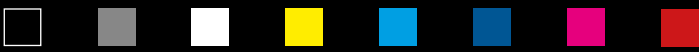
Allows a reduction in machine idle times and operator errors thanks to the integrated scheduled maintenance system.

The supervision software means the parameters associated with ink management can be monitored: temperature, pressure, circulator pumps, and level sensors.

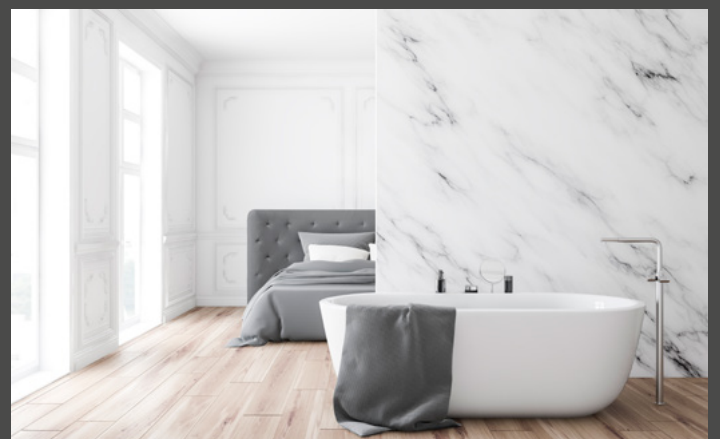


INKS

- The range of ceramic inks used for digital decoration of glass was developed in compliance with the main quality standards and rigorously tested. The chromatic range is formed of cadmium-free and lead-free pure colours formulated from special frits and pigments designed to maximise adhesion to the glass surface. The inks guarantee durability, chemical and mechanical resistance and use in the most adverse conditions.



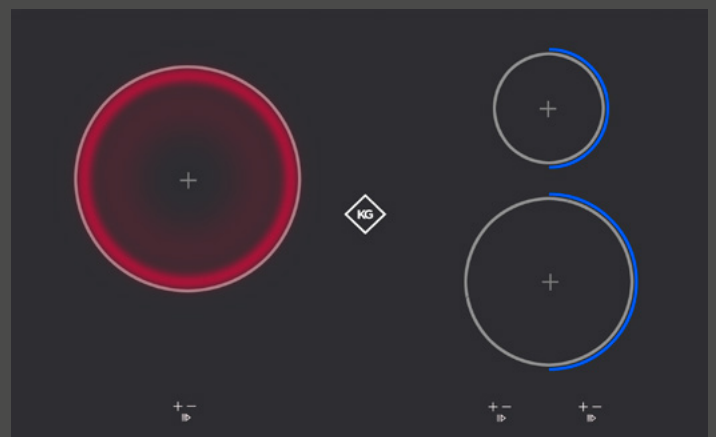
The image displays a grid of visual examples for ceramic ink applications. The top row features a palette of ink colors (black, white, green, grey, yellow, red, blue) and a portrait of a woman. The middle row shows a portrait of a woman, a marble texture, a halftone pattern, and a framed white area. The bottom row shows a portrait of a woman, a marble texture, a halftone pattern, and a framed white area.



DATA SHEETS

Glass line level (mm)	900 ~ 1100
Standard power supply (V,Hz)	400 ~ 480 VAC 50/60 Hz 3ph+N+G
Power required for plotter (Kw)	15
Number of printing heads (to set up)	3 - 24
Maximum print coverage (mm)	1600-2300-2700-3350
Number of ink channels (to set up)	1 - 8
Drop size range (pl)	6 - 400
Print resolution (dpi)	360 - 2880
Glass thickness (mm)	2 - 25

Note: The above-mentioned productivity data are based on 100% useful charge, on a hour constant production and with glass size according to standard rules. Actual productivity depends on the operator's efficiency, size of the glass, shape and quality standards requested by the customer.





keraglass

keraglass.com

The data, descriptions and illustrations of the products shown in this catalog have a pure indicative / advertising value and do not in any case bind the manufacturer and the seller to what in them represented. For marketing reasons the products can be reproduced or represented with non-standard configurations, different colors, or with optional equipment, not updated, with special customizations or with different technical characteristics, also due to construction needs. The manufacturer and the seller reserve the right to make any changes to the products. The sales team remains available for any clarification.